

# 655 THIRD AVENUE

**PARTIAL FLOOR 7**  
13,742 SF



BUILDING EXTERIOR



LOBBY

## AVAILABILITY

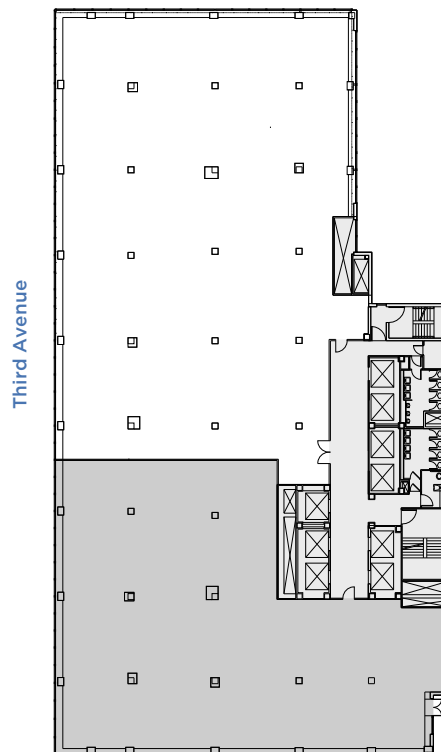
- Built Space
- Available January 2026

## PROPERTY FEATURES

- One block from Grand Central Terminal
- Renovated lobby includes a new concierge desk and turnstiles
- Green roofs and exclusive outdoor terraces
- LEED Gold certification under LEED v4 Existing Buildings: Operations + Maintenance

## CORE & SHELL PLAN

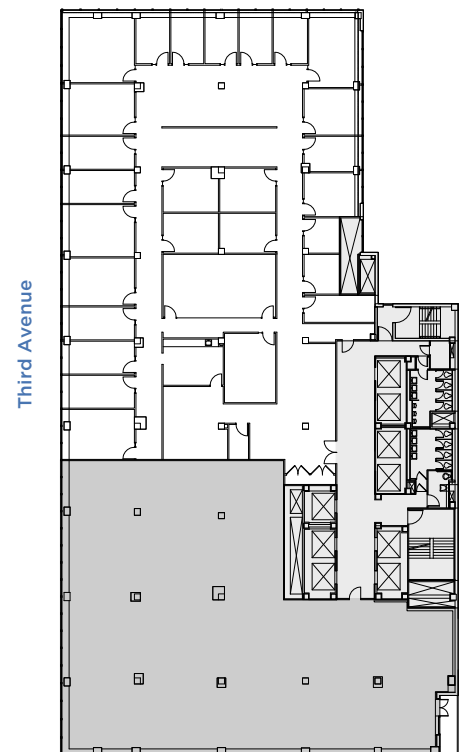
East 42<sup>nd</sup> Street



East 41<sup>st</sup> Street

## AS-BUILT PLAN

East 42<sup>nd</sup> Street



East 41<sup>st</sup> Street



## LEASING CONTACTS

**Ashlea Aaron**  
212.257.6590  
AAaron@durst.org

**Bailey Caliban**  
212.257.6535  
BCaliban@durst.org

**Sayo Kamara**  
212.789.1761  
SKamara@durst.org

# 655 THIRD AVENUE

**PARTIAL FLOOR 7**  
13,742 SF



BUILDING EXTERIOR



LOBBY

## AVAILABILITY

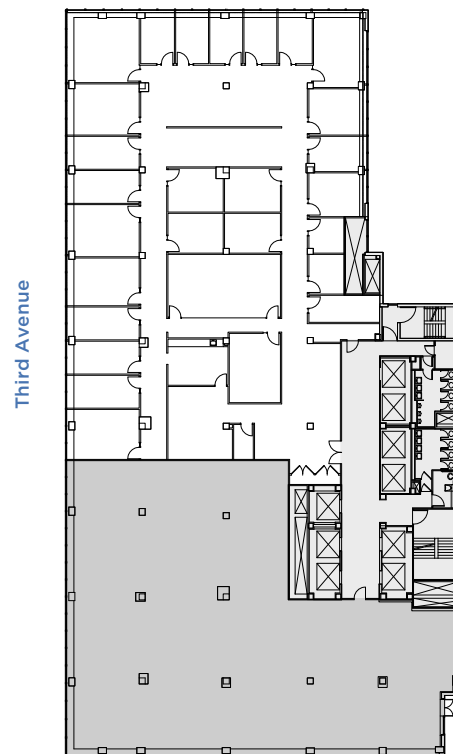
- Built Space
- Available January 2026

## PROPERTY FEATURES

- One block from Grand Central Terminal
- Renovated lobby includes a new concierge desk and turnstiles
- Green roofs and exclusive outdoor terraces
- LEED Gold certification under LEED v4 Existing Buildings: Operations + Maintenance

## AS-BUILT PLAN

East 42<sup>nd</sup> Street



East 41<sup>st</sup> Street



### LEASING CONTACTS

**Ashlea Aaron**  
212.257.6590  
AAaron@durst.org

**Bailey Caliban**  
212.257.6535  
BCaliban@durst.org