

# EXCEPTIONAL RESTAURANT OPPORTUNITY

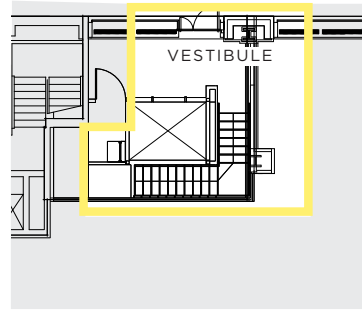
7,196 TOTAL SF



PRIVATE DINING ROOM

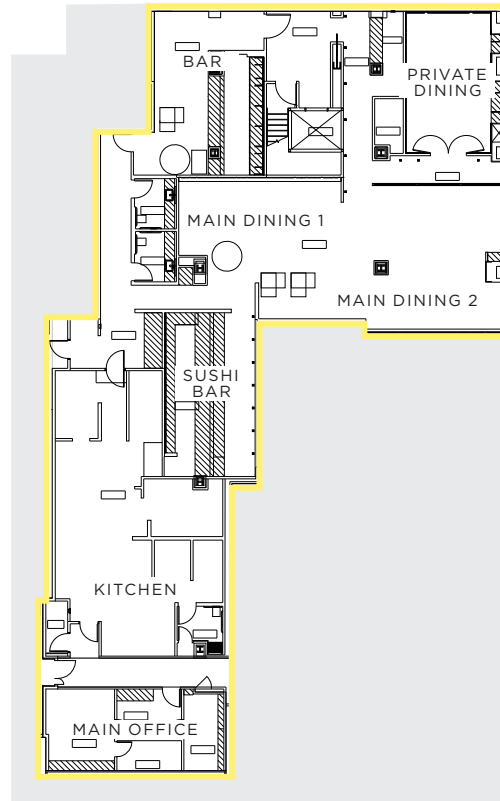
## GROUND FLOOR WITH VESTIBULE: AS-BUILT PLAN

West 47<sup>th</sup> Street



## LOWER LEVEL: AS-BUILT PLAN

West 47<sup>th</sup> Street



West 46<sup>th</sup> Street

### AVAILABILITY

- High-End Restaurant Buildout
- Turnkey Condition
- 406-SF Entry Vestibule + 6,790-SF Lower Level
- Main Dining, Private Dining, Bar, Sushi Bar, Commercial Kitchen, and BOH Spaces
- Located mere moments from seven subway lines and within blocks of renowned international firms, prestigious private clubs, popular hotels, Rockefeller Center, Times Square, and New York's legendary Theater District

### OCCUPANCY SUMMARY

Vestibule	3
Bar	11
Private Dining	15
Main Dining 1	14
Main Dining 2	34
Sushi Bar	10
Kitchen	6
Main Office	4
<b>TOTAL</b>	<b>97</b>