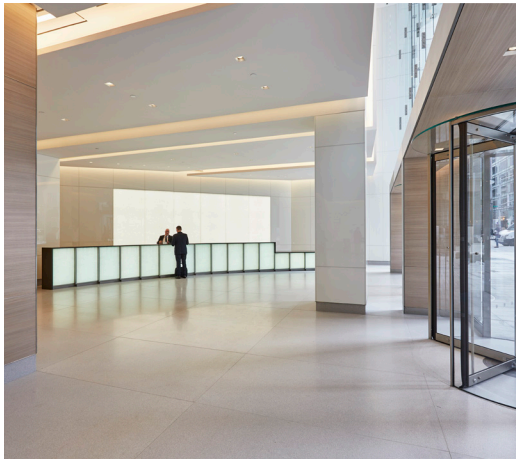


1155

AVENUE OF THE AMERICAS

A VIEW FOR EVERY VISION

ENTIRE FLOOR 5-6
30,140 SF EACH



LOBBY



PLAZA & ENTRANCE

AVAILABILITY

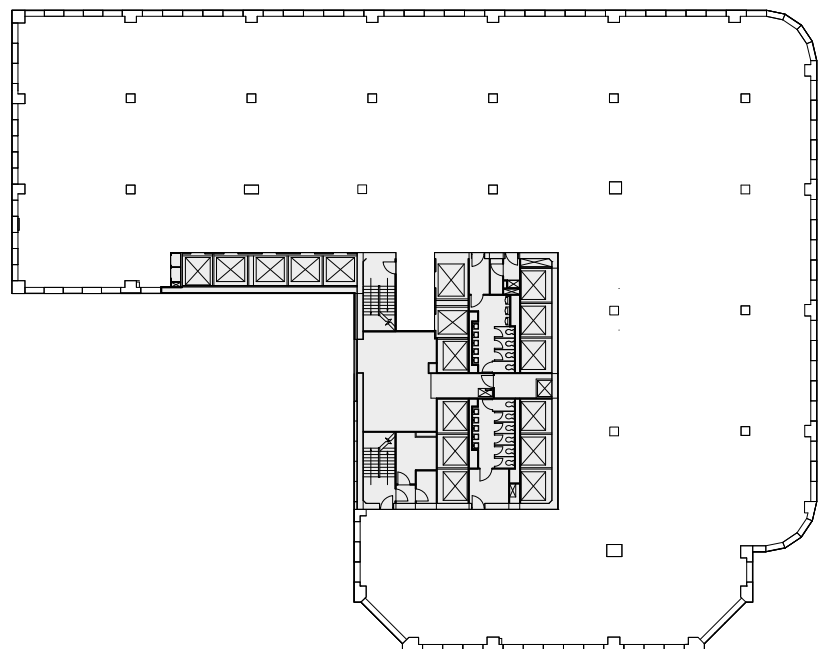
- Contiguous Block of Up to 217K SF with 6,000-SF Terrace Fronting AofA on 7th Floor

PROPERTY FEATURES

- New Landscaped Plaza, Building Entrance, and Lobby
- Elevator Modernization Including Destination Dispatch Controls
- New Energy-Efficient Curtain Wall with Floor-to-Ceiling Clear Glazing at Chamfered Corners
- New Low-Iron Energy-Efficient Casement Windows
- Certified LEED Gold Under LEED v4 Existing Buildings: Operations + Maintenance
- Located at the Convergence of Bryant Park and Corporate Row — Mere Minutes From Grand Central Terminal, 16 Subway Lines, and Some of NYC's Best Dining and Entertainment

CORE & SHELL PLAN

West 45th Street



West 44th Street

Avenue of the Americas



LEASING CONTACTS

Rocco Romeo
212.257.6630
RRomeo@durst.org

Thomas Bow
212.257.6610
TBow@durst.org

Lauren Ferrentino
212.257.6596
LFerrentino@durst.org

Nora Caliban
212.789.6029
NCaliban@durst.org

1155Aoa.com