

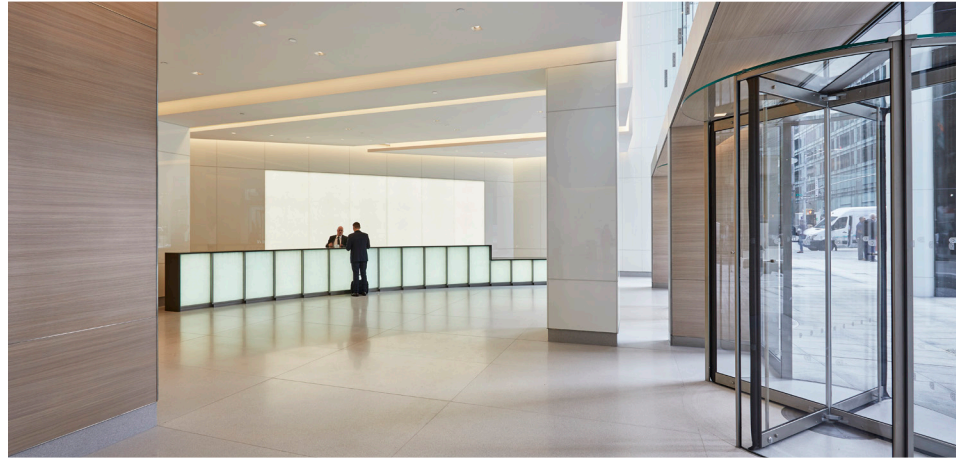
# 1155

AVENUE OF THE AMERICAS  
A VIEW FOR EVERY VISION

## PARTIAL FLOOR 11 SUITE 1120 13,164 SF



ENTRANCE



LOBBY

### AVAILABILITY FEATURES

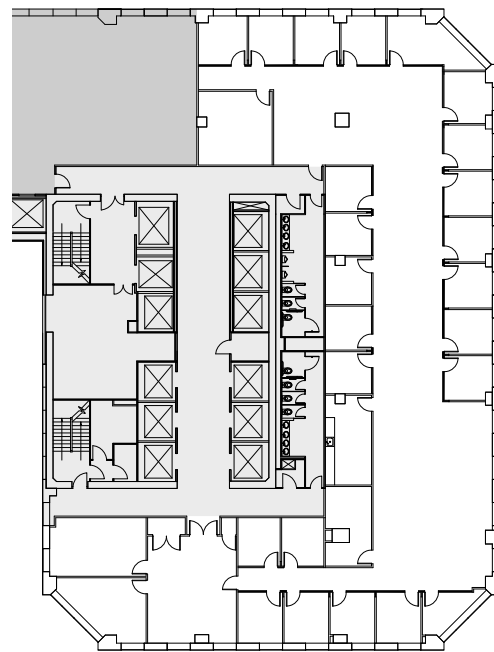
- Built Space With 24 Private Offices and 2 Conference Rooms
- Efficient Blended Open/Office Layout
- Potential to Combine With Adjacent Suite

### PROPERTY FEATURES

- New Landscaped Plaza, Building Entrance, and Lobby
- Elevator Modernization Including Destination Dispatch Controls
- New Energy-Efficient Curtain Wall With Floor-to-Ceiling Clear Glazing at Chamfered Corners
- New Low-Iron Energy-Efficient Casement Windows
- Certified LEED Gold Under LEED v4 Existing Buildings: Operations + Maintenance
- Located at the Convergence of Bryant Park and Corporate Row — Mere Minutes From Grand Central Terminal, 16 Subway Lines, and Some of NYC's Best Dining and Entertainment

### AS-BUILT PLAN

West 45<sup>th</sup> Street



West 44<sup>th</sup> Street

Avenue of the Americas



#### LEASING CONTACTS

**Rocco Romeo**  
212.257.6630  
RRomeo@durst.org

**Thomas Bow**  
212.257.6610  
TBow@durst.org

**Lauren Ferrentino**  
212.257.6596  
LFerrentino@durst.org

**Nora Caliban**  
212.789.6029  
NCaliban@durst.org

1155Aoa.com