

# 220 FRONT STREET

## GROUND FLOOR RETAIL 800 SF



STOREFRONT\*



TURNKEY WINEBAR BUILDOUT\*

### AVAILABILITY

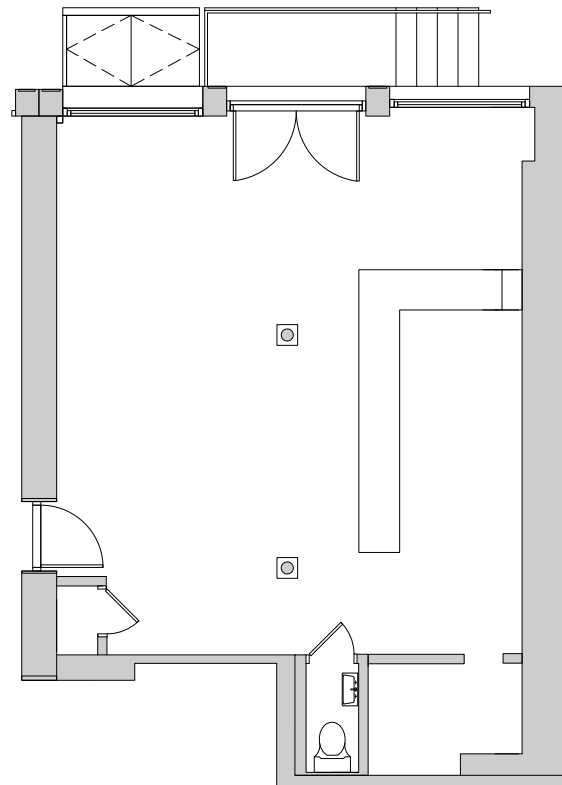
- Alternate Dry Good Uses Considered
- All Glass Storefront
- Four Steps Above Grade
- Interior Accentuated with Historical Detailing and Materials
- 25' of Frontage
- 16' Ceilings
- Immediate Possession

### PROPERTY FEATURES

- Historic Front Street comprises eleven restored 18th century buildings and three new construction buildings with 95 residential and 15 commercial units.
- The surrounding restaurants, bars, shops, and museums of the Seaport District — as well as the newly activated Pier 17 and proximity to the Brooklyn Bridge — provide year-round foot traffic.
- Actively developing residential, commercial, and retail neighborhood with 938 residential units and 230k SF of office currently under construction.

### AS-BUILT PLAN

Front Street



**Karen Rose**  
212.667.8705  
KRose@durst.org



**Brad Schwarz**  
212.776.1290  
BSchwarz@lee-associates.com

**JP Sutro**  
212.776.1274  
JSutro@lee-associates.com

**Olivia Hwang**  
212.776.1238  
OHwang@lee-associates.com