

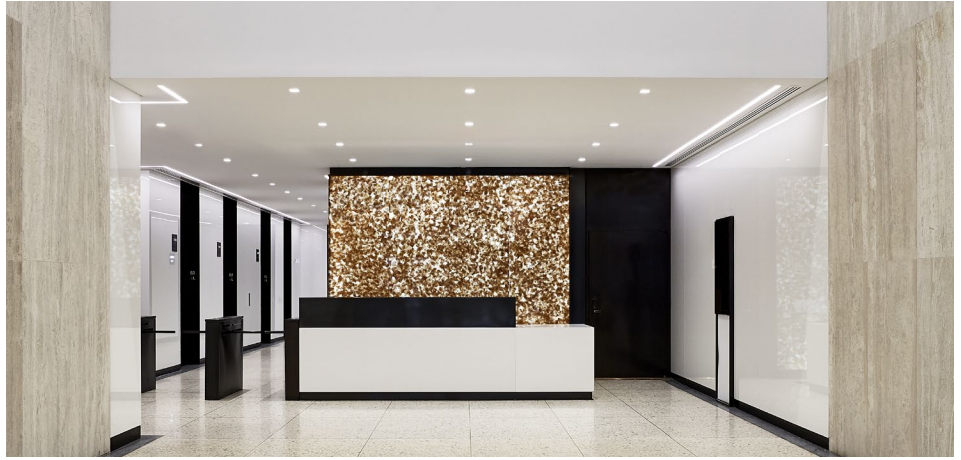


# PARTIAL FLOOR 28

5,275 SF



BUILDING EXTERIOR



LOBBY

### AVAILABILITY

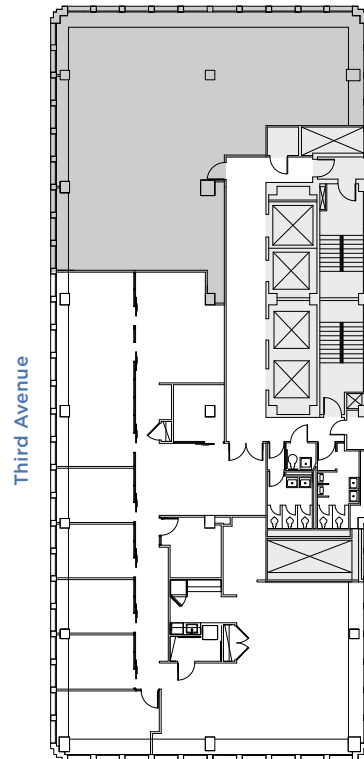
- Built Space
- Office Intensive Layout

### PROPERTY FEATURES

- Highly desirable location, one block from Grand Central Terminal
- Green roofs and exclusive outdoor terraces
- Outdoor plaza featuring a zinc green wall
- Renovated lobby
- Certified Gold under LEED v4 Existing Buildings: Operations + Maintenance

### AS-BUILT PLAN

East 43<sup>rd</sup> Street



East 42<sup>nd</sup> Street



#### LEASING CONTACTS

**Ashlea Aaron**  
212.257.6590  
AAaron@durst.org

**Sayo Kamara**  
212.789.1761  
skamara@durst.org

**Bailey Caliban**  
212.257.6535  
BCaliban@durst.org