

655 THIRD AVENUE

PARTIAL FLOOR 14
4,767 SF



BUILDING EXTERIOR



LOBBY

AVAILABILITY

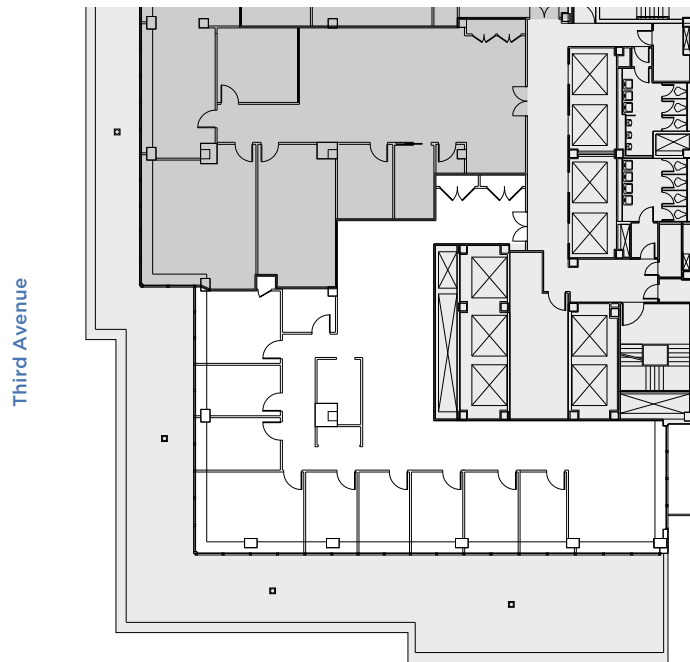
- Built Space

PROPERTY FEATURES

- One block from Grand Central Terminal
- Renovated lobby includes a new concierge desk and turnstiles
- Green roofs and exclusive outdoor terraces
- LEED Gold certification under LEED v4 Existing Buildings: Operations + Maintenance

AS-BUILT PLAN

East 42nd Street



Third Avenue

East 41st Street



LEASING CONTACTS

Ashlea Aaron
212.257.6590
AAaron@durst.org

Bailey Caliban
212.257.6535
BCaliban@durst.org

Sayo Kamara
212.789.1761
SKamara@durst.org