

1155

AVENUE OF THE AMERICAS

A VIEW FOR EVERY VISION

GROUND FLOOR RETAIL WITH LOWER LEVEL

2,275++ SF



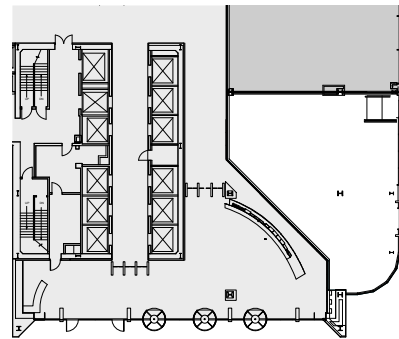
AVAILABILITY

- 70' of Prime Avenue of the Americas Frontage
- Corner Retail Adjacent to Lobby Entrance
- Additional Ground Floor Space Can Be Made Available
- Up to 6,000 SF Lower Level Available

PROPERTY FEATURES

- Steps from Bryant Park and Within Blocks of Renowned International Firms, Prestigious Private Clubs, Popular Hotels, Acclaimed Restaurants, Times Square, and New York's Legendary Theater District
- New Landscaped Plaza, Building Entrance, and Lobby
- Certified LEED Gold Under LEED v4 Existing Buildings: Operations + Maintenance
- Located at the Convergence of Bryant Park and Corporate Row — Mere Minutes From Grand Central Terminal, 16 Subway Lines, and Some of NYC's Best Dining and Entertainment

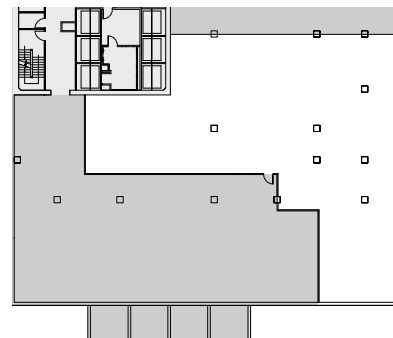
GROUND FLOOR



West 44th Street

Avenue of the Americas

LOWER LEVEL



West 44th Street

Avenue of the Americas



LEASING CONTACTS

Rocco Romeo
212.257.6630
RRomeo@durst.org

Nora Caliban
212.789.6029
NCaliban@durst.org

Thomas Bow
212.257.6610
TBow@durst.org

1155Aoa.com