



## PARTIAL FLOOR 18

SUITE 1850  
3,979 SF



BUILDING EXTERIOR



LOBBY

### AVAILABILITY

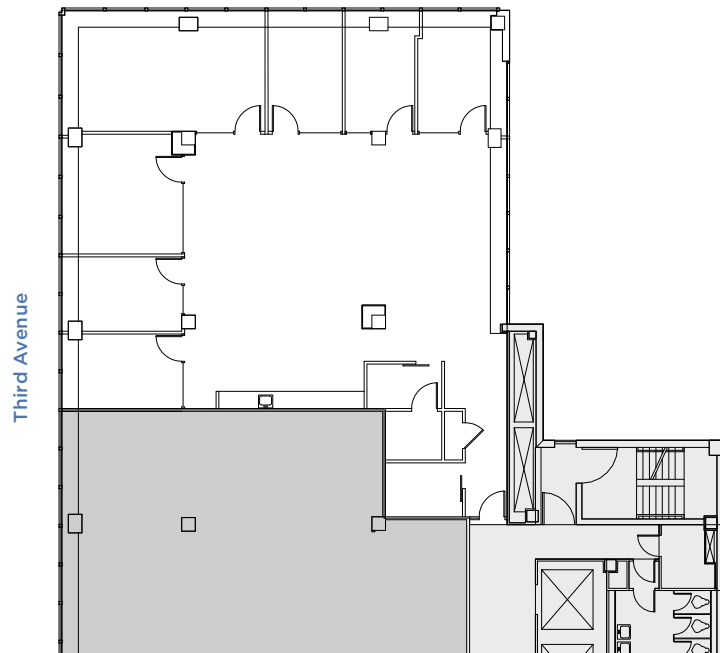
- Built Space
- Blended Layout with Perimeter Offices

### PROPERTY FEATURES

- One block from Grand Central Terminal
- Superb location at the southeast corner of 42<sup>nd</sup> Street and Third Avenue
- Bright interiors with large continuous windows
- Green roofs and exclusive outdoor terraces
- LEED Gold certification under LEED v4 Existing Buildings: Operations + Maintenance

### AS-BUILT PLAN

East 42<sup>nd</sup> Street



Third Avenue



#### LEASING CONTACTS

**Ashlea Aaron**  
212.257.6590  
AAaron@durst.org

**Bailey Caliban**  
212.257.6535  
BCaliban@durst.org

**Sayo Kamara**  
212.789.1761  
SKamara@durst.org