

114 WEST 47

Test Fits

# Contents

TAMI

Floor 5  
Floor 10  
Floor 22

Financial

Floor 5  
Floor 10  
Floor 22

Boutique Firm

Floor 24

Core & Shell

Floor 5  
Floor 10  
Floor 22  
Floor 24

The image features a light beige background with a central white circle. This circle is surrounded by four groups of vertical gray stripes, positioned at the top-left, top-right, bottom-left, and bottom-right corners. The stripes are of uniform width and height, creating a symmetrical, decorative border around the central text.

TAMI

# FLOOR 5

## TAMI

Rentable Area: **32,100 RSF**  
 RSF Per Person: **199 RSF**

### PERSONNEL

SPACE TYPE	PLAN
Private Office	10
Workstation	150
Receptionist	1
<b>TOTAL</b>	<b>161</b>

### COLLABORATION

SPACE TYPE	SEATS	PLAN	
		SPACE	SEATS
<b>CLOSED:</b>			
Conference	16	1	16
Conference	12	2	24
Conference	8	2	16
Conference	5	1	5
Meeting	4	1	4
Meeting	3	1	3
Phone Room	1	6	6
Collaboration Room	4	1	4
<b>OPEN:</b>			
Café	40	1	40
Breakout	-	8	42
<b>TOTAL</b>		<b>24</b>	<b>160</b>

### SUPPORT

SPACE TYPE	PLAN
Reception	1
Pantry	1
Copy/Print Area	3
Coats	2
IT Room	1
Storage	5
Phone Booth	3
Wellness Room	2



# FLOOR 10

## TAMI

Rentable Area: **27,700 RSF**  
 RSF Per Person: **195 RSF**

### PERSONNEL

SPACE TYPE	PLAN
Private Office	10
Executive Assistant	4
Workstation	127
Receptionist	1
<b>TOTAL</b>	<b>142</b>

### COLLABORATION

SPACE TYPE	SEATS	PLAN	
		SPACE	SEATS
<b>CLOSED:</b>			
Conference	16	2	32
Conference	14	2	28
Conference	6	1	6
Meeting	3	1	3
Phone Room	2	1	2
Collaboration Room	7	1	7
<b>OPEN:</b>			
Café	15	1	15
Breakout	-	7	33
<b>TOTAL</b>		<b>16</b>	<b>126</b>

### SUPPORT

SPACE TYPE	PLAN
Reception	1
Pantry	1
Copy/Print Area	2
IT Room	1
Storage	2
Putting Green	1



# FLOOR 22

## TAMI

Rentable Area: **23,900 RSF**  
 RSF Per Person: **219 RSF**

### PERSONNEL

SPACE TYPE	PLAN
Executive Office	2
Private Office	9
Workstation	97
Receptionist	1
<b>TOTAL</b>	<b>109</b>

### COLLABORATION

SPACE TYPE	SEATS	PLAN	
		SPACE	SEATS
<b>CLOSED:</b>			
Conference	12	1	12
Conference	8	2	16
Conference	6	1	6
Phone Room	1	1	1
Collaboration Room	7	2	14
<b>OPEN:</b>			
Café	22	2	44
Breakout	-	4	16
<b>TOTAL</b>		<b>13</b>	<b>109</b>

### SUPPORT

SPACE TYPE	PLAN
Reception	1
Copy/Print	2
IT Room	1
Phone Booth	3
Wellness Room	2



The image features a background of vertical stripes in a light gray color on a white background. The stripes are arranged in three groups: a group of six stripes on the left, a group of ten stripes in the center, and a group of six stripes on the right. A large, white, circular shape is centered in the middle of the page, overlapping the central group of stripes. Inside this circle, the word "Financial" is written in a black, serif font.

Financial

# FLOOR 5 FINANCIAL

Rentable Area: **32,100 RSF**  
RSF Per Person: **198 RSF**

## PERSONNEL

SPACE TYPE	PLAN
Executive Office	3
Private Office	34
Executive Assistant	4
Workstation	120
Receptionist	1
<b>TOTAL</b>	<b>162</b>

## COLLABORATION

SPACE TYPE	SEATS	PLAN	
		SPACE	SEATS
<b>CLOSED:</b>			
Conference	16	1	16
Conference	12	2	24
Conference	8	2	16
Phone Room	1	3	3
<b>OPEN:</b>			
Breakout	-	7	38
<b>TOTAL</b>		<b>15</b>	<b>97</b>

## SUPPORT

SPACE TYPE	PLAN
Reception	1
Pantry	2
Copy/Print Area	2
Coats	1
IT Room	1
Storage	2
Phone Booth	2
Golf Simulator	2

WEST 47<sup>TH</sup> STREET



WEST 46<sup>TH</sup> STREET

# FLOOR 10 FINANCIAL

Rentable Area: **27,700 RSF**  
RSF Per Person: **213 RSF**

## PERSONNEL

SPACE TYPE	PLAN
Private Office	20
Executive Assistant	6
Workstation	103
Receptionist	1
<b>TOTAL</b>	<b>130</b>

## COLLABORATION

SPACE TYPE	SEATS	PLAN	
		SPACE	SEATS
<b>CLOSED:</b>			
Conference	16	1	16
Conference	12	2	24
Conference	8	1	8
Conference	6	1	6
Meeting Room	3	1	3
Phone Room	1	5	5
<b>OPEN:</b>			
Café	49	1	49
Breakout	-	7	22
<b>TOTAL</b>		<b>19</b>	<b>133</b>

## SUPPORT

SPACE TYPE	PLAN
Reception	1
Pantry	1
Copy/Print Area	2
IT Room	1
Storage	3
Wellness Room	1



# FLOOR 22

## FINANCIAL

Rentable Area: **23,900 RSF**  
 RSF Per Person: **266 RSF**

### PERSONNEL

SPACE TYPE	PLAN
Executive Office	8
Private Office	13
Executive Assistant	4
Workstation	64
Receptionist	1
<b>TOTAL</b>	<b>90</b>

### COLLABORATION

SPACE TYPE	SEATS	PLAN	
		SPACE	SEATS
<b>CLOSED:</b>			
Conference	16	1	16
Conference	6	1	6
Meeting	4	1	4
Meeting	3	1	3
<b>OPEN:</b>			
Café	49	1	49
Breakout	-	4	9
<b>TOTAL</b>		<b>9</b>	<b>87</b>

### SUPPORT

SPACE TYPE	PLAN
Reception	1
Pantry	1
Copy/Print Area	1
IT Room	1
Storage	2



The background features a repeating pattern of vertical gray stripes of varying widths. A large, white, circular area is centered on the page, containing the text.

# Boutique Firm

# FLOOR 24

## BOUTIQUE FIRM

Rentable Area: **19,700 RSF**  
 RSF Per Person: **493 RSF**

### PERSONNEL

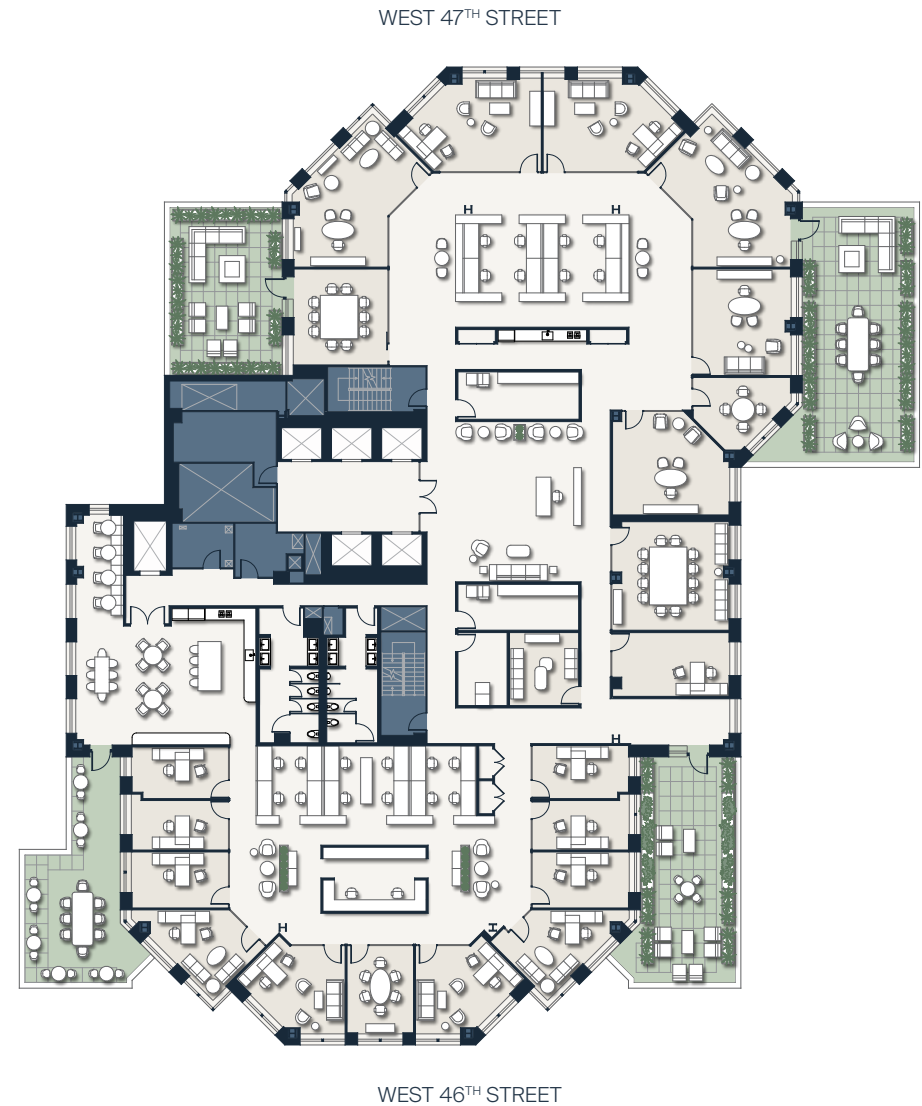
SPACE TYPE	PLAN
Executive Office with Terrace	2
Executive Office	8
Private Office	7
Executive Assistant	2
Workstation	20
Receptionist	1
<b>TOTAL</b>	<b>40</b>

### COLLABORATION

SPACE TYPE	SEATS	PLAN	
		SPACE	SEATS
<b>CLOSED:</b>			
Conference	12	1	12
Conference	10	1	10
Conference	6	1	6
Meeting	4	1	4
Collaboration Room	8	1	8
<b>OPEN:</b>			
Café	32	1	32
Breakout	-	4	8
Outdoor Terrace	-	2	32
<b>TOTAL</b>		<b>12</b>	<b>112</b>

### SUPPORT

SPACE TYPE	PLAN
Reception	1
Copy/Print Area	2
Coat	2
IT Room	1

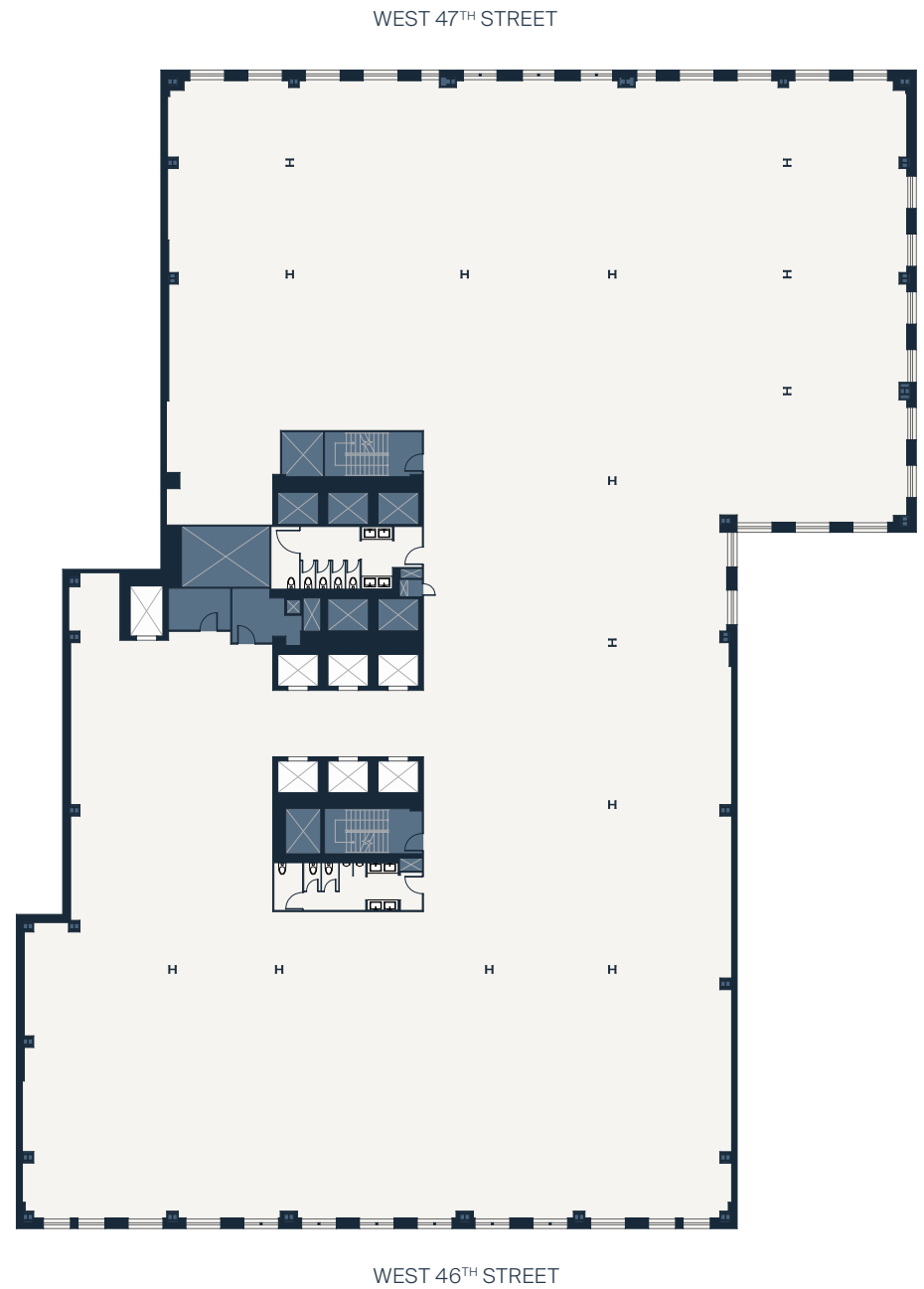


# Core & Shell

PLANS

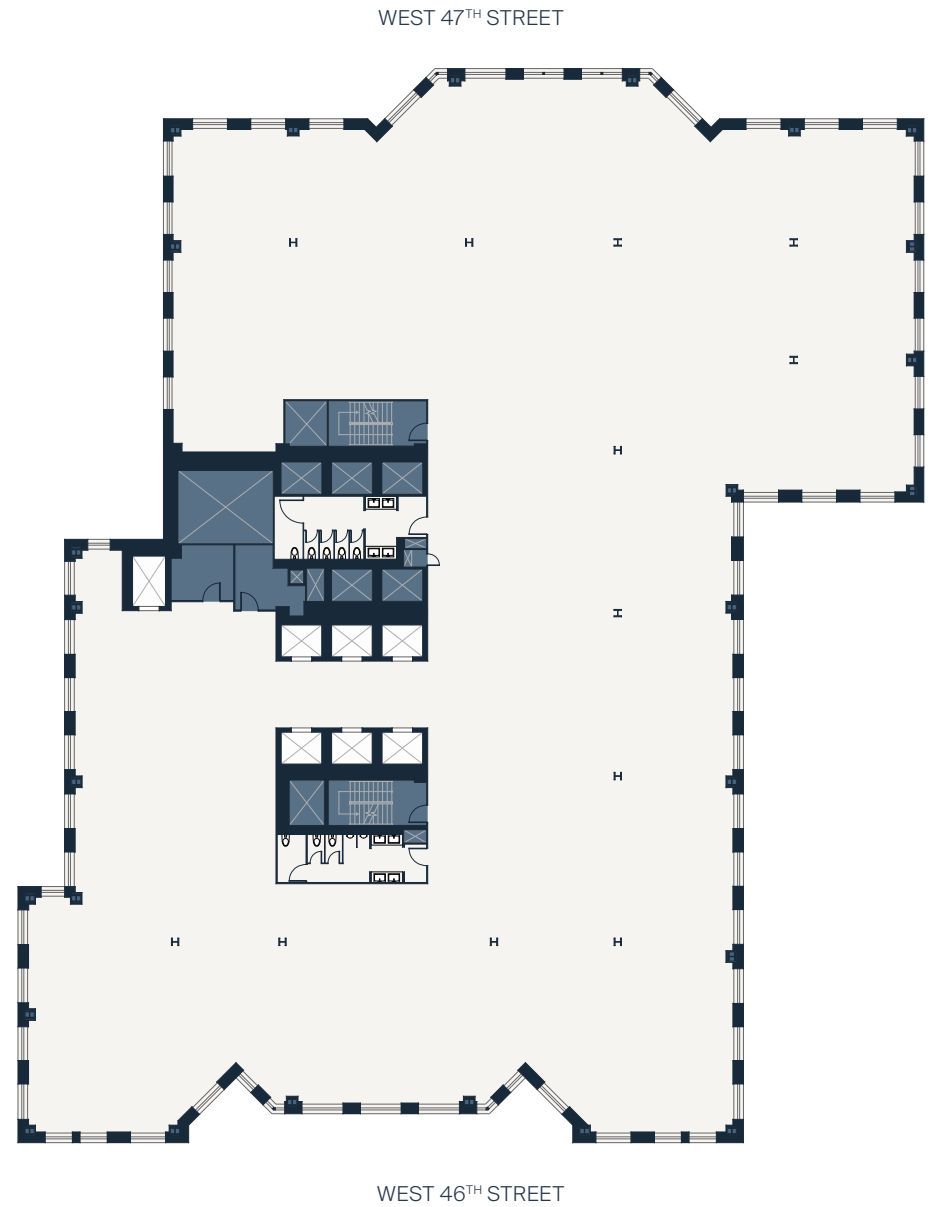
# FLOOR 5 CORE & SHELL

Rentable Area: 32,100 SF



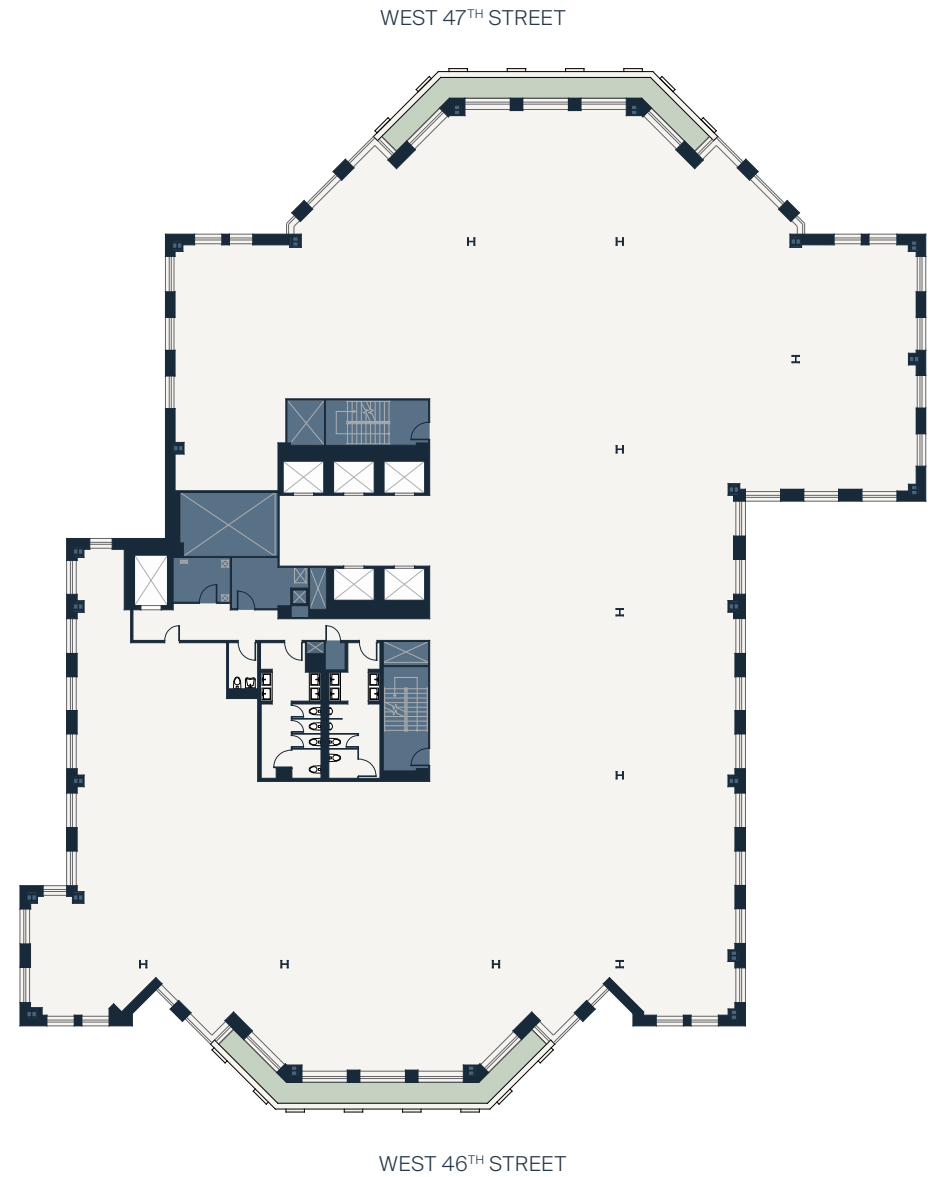
# FLOOR 10 CORE & SHELL

Rentable Area: 27,700 SF



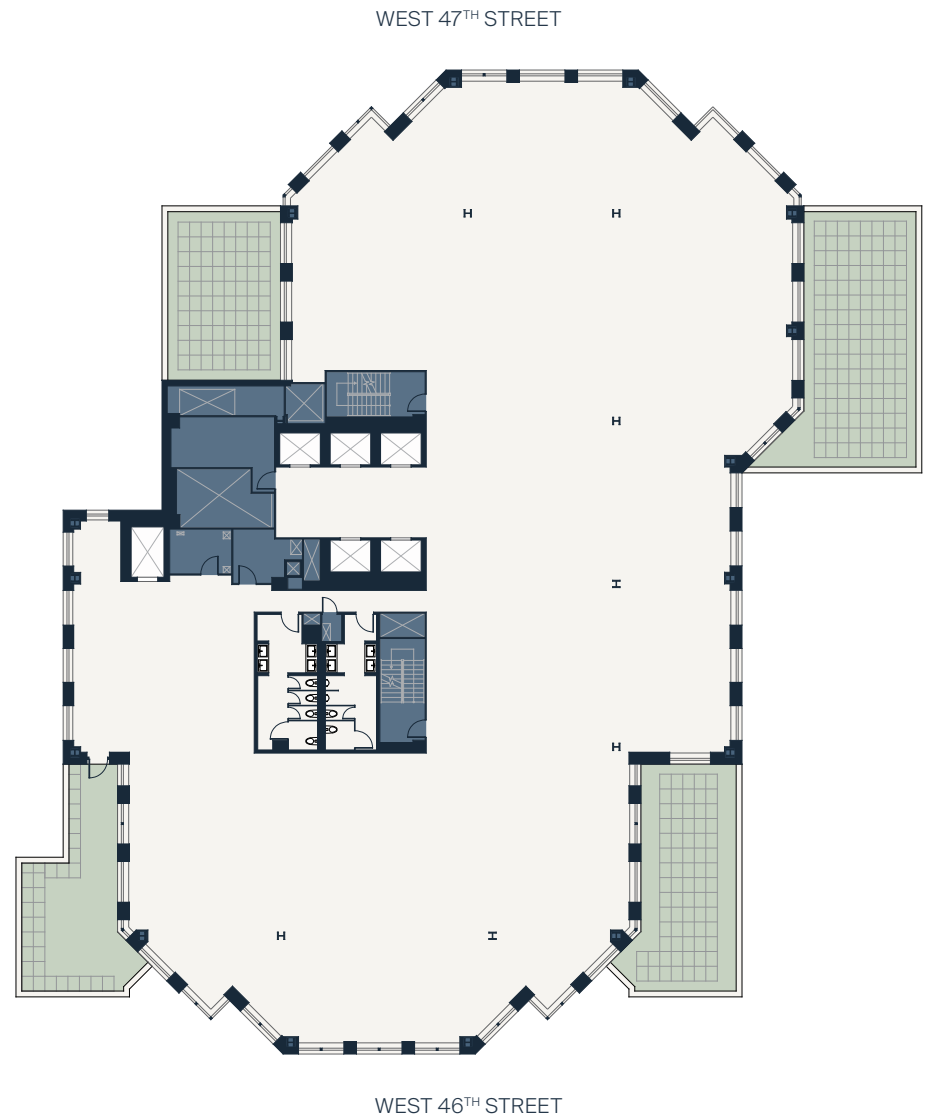
# FLOOR 22 CORE & SHELL

Rentable Area: 23,900 SF



# FLOOR 24 CORE & SHELL

Rentable Area: 19,700 SF



# 114 WEST 47

A Headquarters Opportunity  
in the Heart of Midtown



ERIC ENGELHARDT  
212.257.6620 | [EEngelhardt@durst.org](mailto:EEngelhardt@durst.org)

THOMAS BOW  
212.257.6610 | [TBow@durst.org](mailto:TBow@durst.org)

ROCCO ROMEO  
212.257.6630 | [RRomeo@durst.org](mailto:RRomeo@durst.org)

NORA CALIBAN  
212.789.6029 | [NCaliban@durst.org](mailto:NCaliban@durst.org)



MARY ANN TIGHE  
212.984.8128 | [MaryAnn.Tighe@cbre.com](mailto:MaryAnn.Tighe@cbre.com)

EVAN HASKELL  
212.984.8049 | [Evan.Haskell@cbre.com](mailto:Evan.Haskell@cbre.com)

CHARLES P. LAGINESTRA  
212.984.8383 | [Charles.P.Laginestra@cbre.com](mailto:Charles.P.Laginestra@cbre.com)

CAROLINE MERCK  
212.984.8336 | [Caroline.Merck@cbre.com](mailto:Caroline.Merck@cbre.com)

NATALIE CHUNG  
212.984.8166 | [Natalie.Chung2@cbre.com](mailto:Natalie.Chung2@cbre.com)