

1133

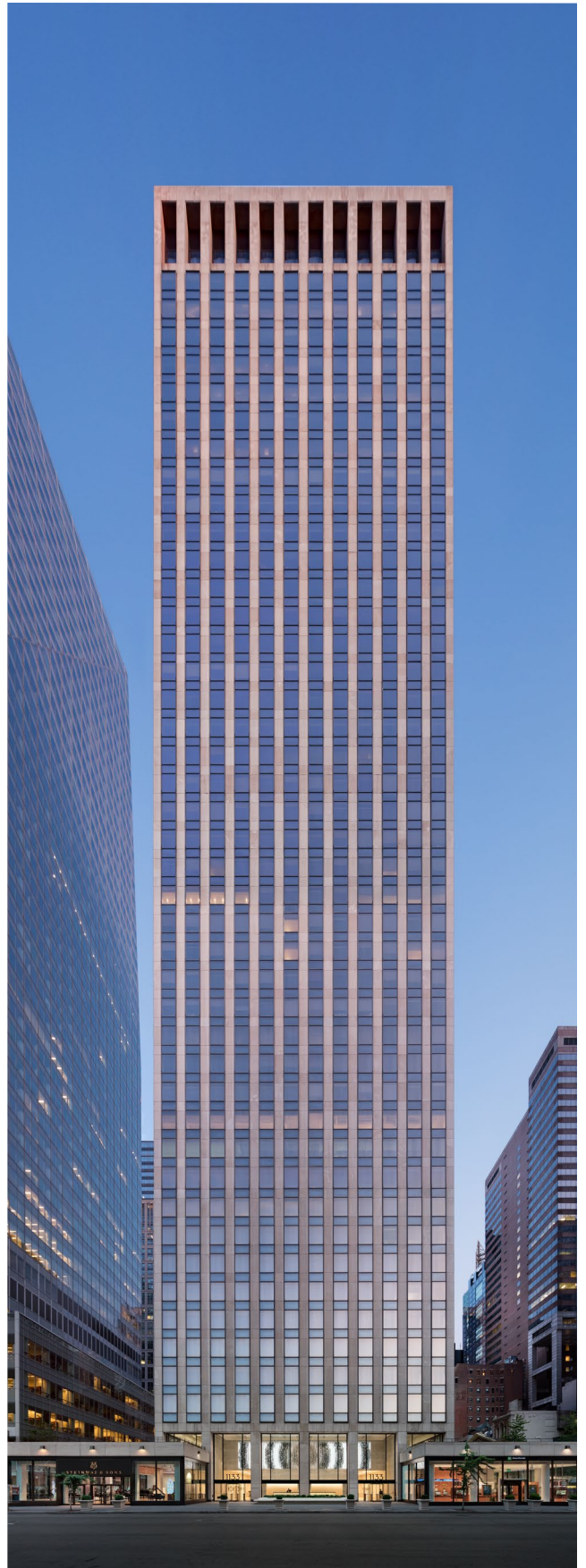
Avenue of the Americas

AVAILABILITIES

Entire Floor 42	23,456 SF <i>Full Floor Opportunity. Space to Be Delivered Raw. Superb Midtown and West Side Views. 116k Contiguous Block Available. Available March 2027.</i>
Entire Floor 41	23,456 SF <i>Full Floor, Build-to-Suit Opportunity. Floor to Be Delivered Raw. Superb Midtown and West Side Views.</i>
Entire Floor 40	22,872 SF <i>Full Floor Opportunity. Space to Be Delivered Raw. Superb Midtown and West Side Views. 116k Contiguous Block Available. Arranged Possession.</i>
Entire Floor 39	22,872 SF <i>Full Floor Opportunity. Space to Be Delivered Raw. Superb Midtown and West Side Views. 116k Contiguous Block Available. Available March 2027.</i>
Entire Floor 38	22,858 SF <i>Full Floor, Build-to-Suit Opportunity. Floor to Be Delivered Raw. Superb Midtown and West Side Views. 116k Contiguous Block Available. Available March 2027.</i>
Entire Floor 31	22,915 SF <i>Full-Floor Presence. Build-to-Suit Opportunity. Exceptional Light and Midtown West Views. Arranged Possession.</i>
Partial Floor 30	11,458 SF <i>Space to Be Delivered Raw. Superb Midtown and West Side Views. Available Immediately.</i>
Entire Floor 16 DurstReady	22,111 SF <i>Premium Move-In Ready Office Space. Available Now.</i>
Entire Floor 14	8,906 SF <i>Modern Build Out. Efficient Blended Floorplan. Exceptional Light and Midtown Views.</i>
Partial Floor 6 Suite 620	11,700 SF <i>Built Space. Immediate Possession.</i>
Partial Floor 6 Suite 640	3,273 SF <i>Built Space. Available Now.</i>

PROPERTY OVERVIEW

1133 Avenue of the Americas stands as a pillar of strength and substance among the skyscrapers of Manhattan, superbly grounded where Bryant Park meets the new center of Midtown. With a jewel box lobby and distinctive vertical exterior rising to open, light-filled floors, the building's timeless modernism continues beckon global talent. At its peak heights, the penthouse boasts nearly 360° degree views and elicits an instantly magnetic connection to NYC's Skyline.



LEASING CONTACTS

Rocco Romeo
212.257.6630
RRomeo@durst.org

Nora Caliban
212.789.6029
NCaliban@durst.org

Bailey Caliban
212.257.6535
BCaliban@durst.org

1133Aoa.com

1133

Avenue of the Americas

PROPERTY FACT SHEET

OVERVIEW

BUILDING OWNER & MANAGER

The Durst Organization

LEASING CONTACTS

Rocco Romeo

RRomeo@durst.org, 212.257.6630

Nora Caliban

NCaliban@durst.org, 212.789.6029

Bailey Caliban

BCaliban@durst.org, 212.257.6535

YEAR COMPLETED

1970

CAPITAL IMPROVEMENTS

In 2016, a \$40 million capital improvement program completed renovations to the soaring travertine lobby, which include: a new security desk, a striking LED sculpture by Leo Villareal, destination dispatch elevator controls and new elevator cab interiors. Other features of the property include over 5,000 square feet of green roofs and exclusive landscaped terraces for tenants to enjoy.

ARCHITECT

Emory Roth & Sons

LOCATION

1133 Avenue of the Americas between 43rd and 44th Streets

PROXIMITY TO MASS TRANSIT

Times Square / Port Authority: 1, 2, 3, A, C, E, N, Q, R, W, 7, and S subways Bryant Park: B, D, F and M subways Grand Central: 4, 5, 6, 7, and S subways, as well as Metro North Access to M5, M7, M42, and M55 buses

BUILDING HEIGHT

539'

STORIES

45

SLAB TO SLAB HEIGHT

12' to 21'

FLOOR PLATES

Low: 32,000 - 35,000 SF

High: 22,000 - 24,000 SF

STANDARD HOURS OF OPERATION

The on-site Property Management Office is open 8:30 AM to 5:30 PM, Monday through Friday. Building hours are from 8:00 AM to 6:00 PM.

DELIVERIES/LOADING DOCK

The loading dock is located at 111 West 43rd Street. Deliveries requiring freight elevator service can be made Monday through Friday during regular freight hours (8:00 AM to 5:00 PM, excluding holidays). The loading dock bays measure 11'4" high and 12'4" high.

ELEVATORS

20 passenger elevators with destination dispatch and modernized cabs Two freight elevators: 70"d x 84"w x 120"h and 79"d x 70" w x 112"h

SUSTAINABILITY

- LEED Gold certification under LEED v4 Operations + Maintenance: Existing Buildings; one of the first two buildings in NYC to receive certification under the more stringent LEEDv4 rating system
- EPA Water Sense-labeled new plumbing fixtures to promote high-performance and water efficiency
- Tenant recycling program and organics collection program for composting
- Use of green cleaning products, equipment and strategies to promote a healthier work environment
- Renewable wind power is purchased to offset 100% of the building's electricity use
- Green roofs and exclusive outdoor terraces for tenants to enjoy

POWER AND UTILITIES

HEATING, VENTILATION AND AIR CONDITIONING

Heating is provided by boiler systems. The air conditioning system is a high-velocity induction unit system serving the perimeter of the building and a medium velocity variable air-volume system serving the interior areas.

ELECTRICAL SYSTEM

Con Edison delivers electrical power to the building via a second contingent, 277/480V, spot network located in the sidewalk vault. The service is made up of the four 3,200-amp service take-offs, which feed the building's service switchgear. Power is the distributed via pipe and wire risers throughout the building.

The building's electrical distribution system is continuously maintained in accordance with national testing standards and applicable codes to provide the highest level of reliability. It is equipped with a sophisticated, web-enabled electrical metering system, which is used for tenant billing as well as allowing our in-house experts to monitor system performance in real-time. Our in-house electrical engineers analyze new tenant designs and requirements to ensure that sufficient electrical distribution is provided in accordance with the lease terms and building rules and regulations.

TELECOMMUNICATIONS

The Durst Organization offers its tenants a wide range of telecommunication providers. Service providers currently available at 1133 Avenue of the Americas:

- Wireless: AT&T and Verizon Wireless
- Telephone: Verizon
- Internet: Cogent Communication, Crown Castle, Astound Broadband Powered by RCN, and Spectrum
- Television: RCN and Spectrum



LEASING CONTACTS

Rocco Romeo

212.257.6630

RRomeo@durst.org

Nora Caliban

212.789.6029

NCaliban@durst.org

Bailey Caliban

212.257.6535

BCaliban@durst.org

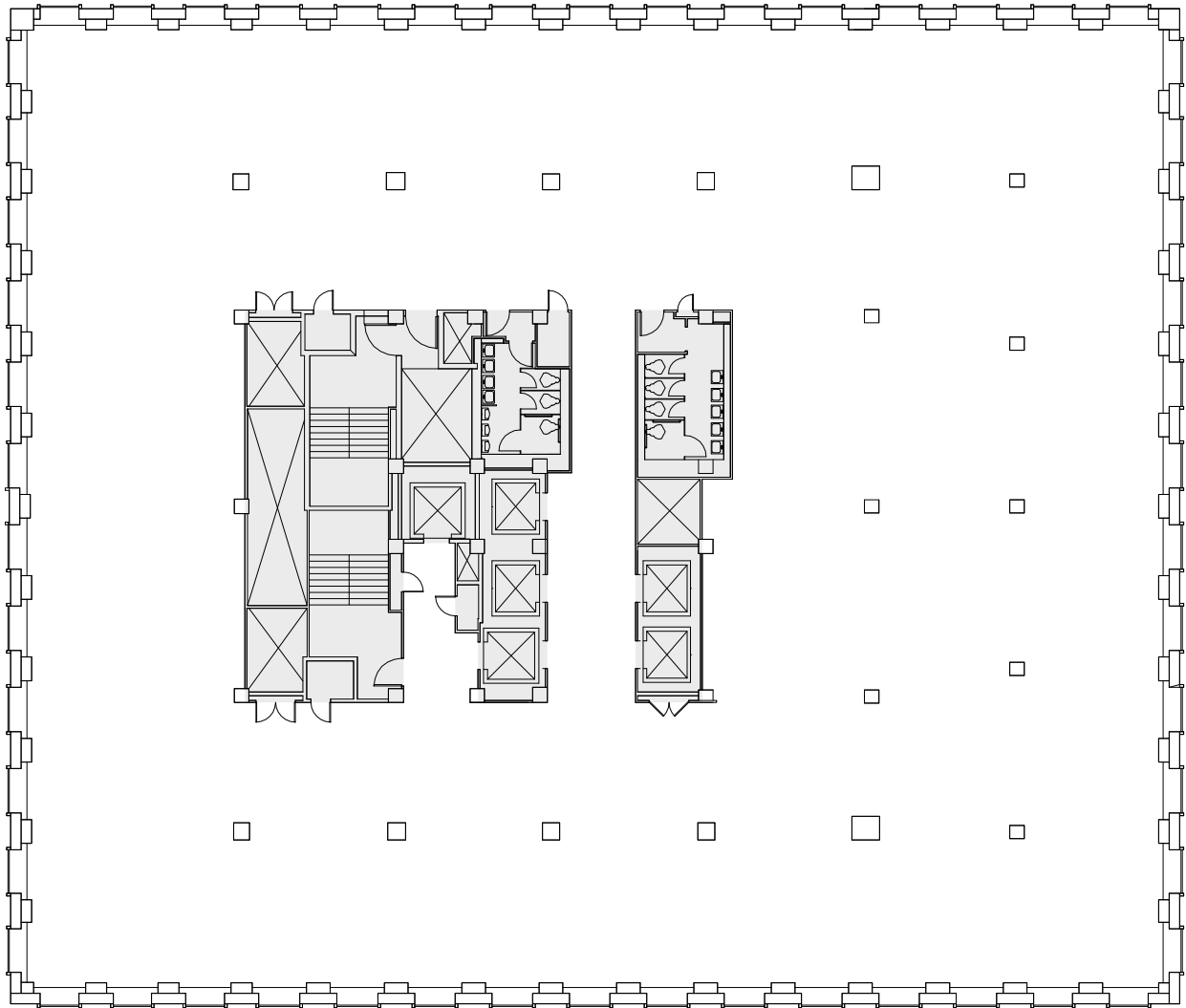
1133Aoa.com

1133

Avenue of the Americas

CORE & SHELL PLAN ENTIRE FLOOR 42

West 44th Street



Avenue of the Americas

West 43rd Street

23,456 SF



LEASING CONTACTS

Rocco Romeo
212.257.6630
RRomeo@durst.org

Nora Caliban
212.789.6029
NCaliban@durst.org

Bailey Caliban
212.257.6535
BCaliban@durst.org

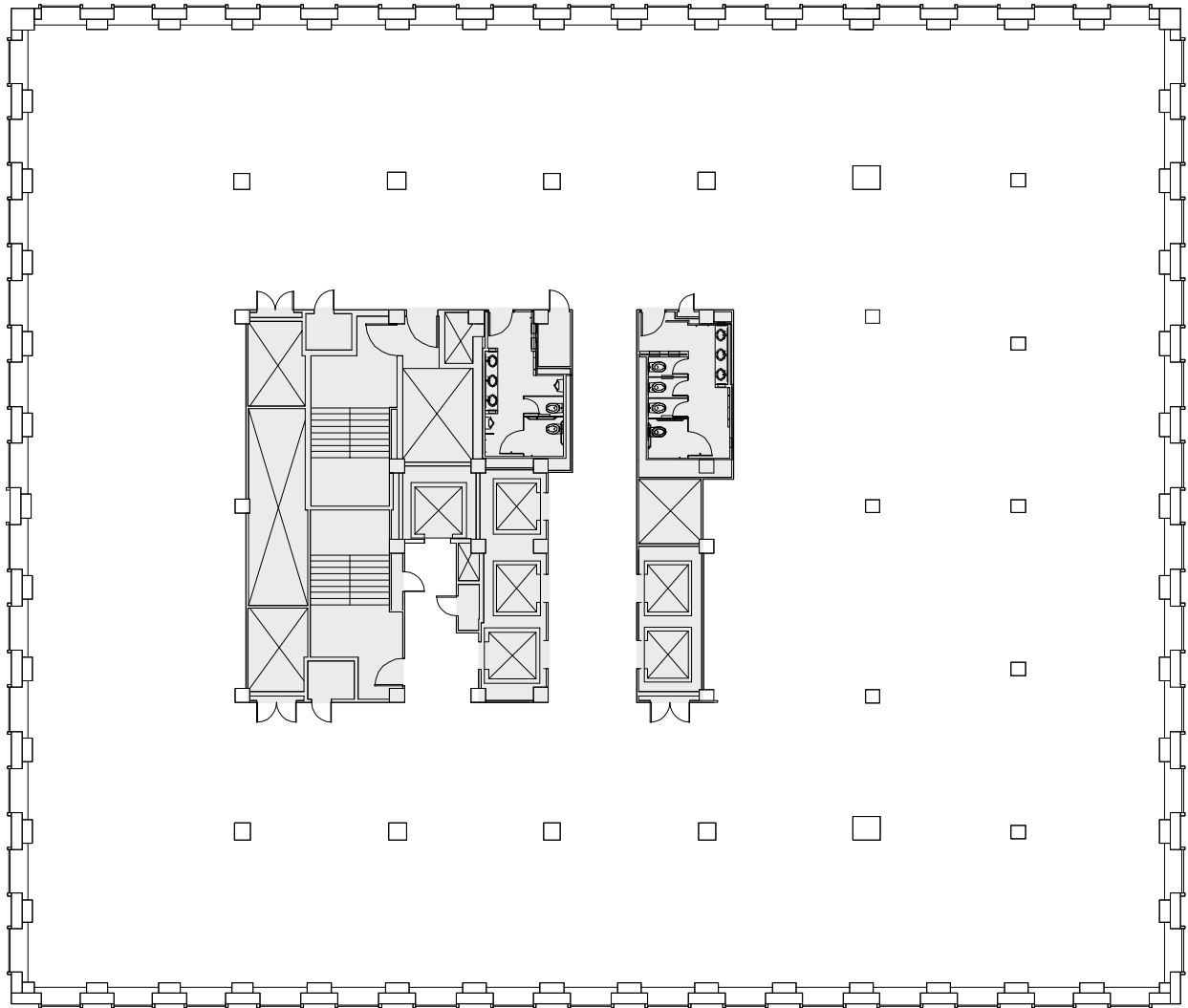
1133Aoa.com

1133

Avenue of the Americas

CORE & SHELL PLAN ENTIRE FLOOR 41

West 44th Street



Avenue of the Americas

West 43rd Street

23,456 SF



LEASING CONTACTS

Rocco Romeo
212.257.6630
RRomeo@durst.org

Nora Caliban
212.789.6029
NCaliban@durst.org

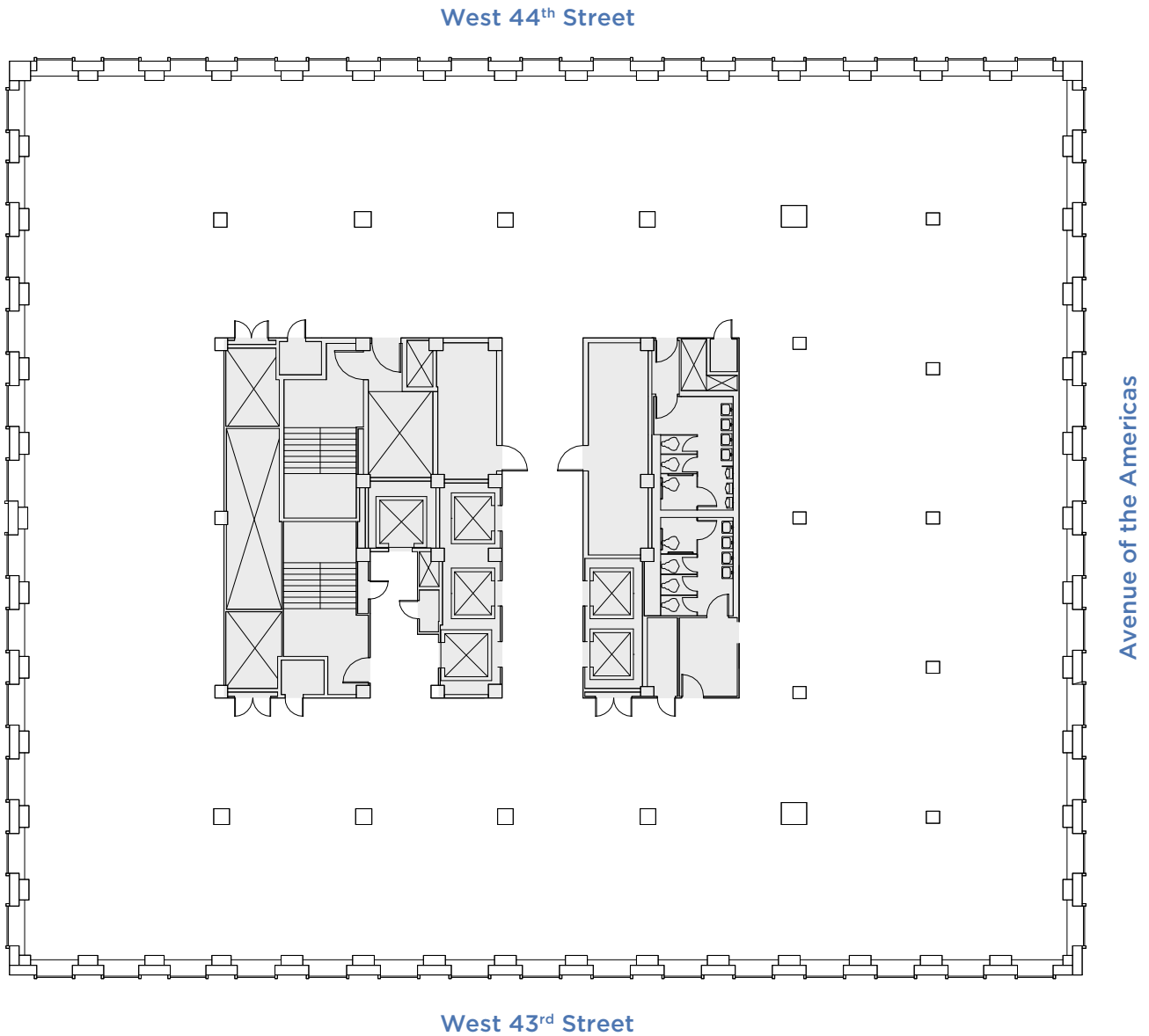
Bailey Caliban
212.257.6535
BCaliban@durst.org

1133Aoa.com

1133

Avenue of the Americas

CORE & SHELL PLAN ENTIRE FLOOR 40



22,872 SF



LEASING CONTACTS

Rocco Romeo
212.257.6630
RRomeo@durst.org

Nora Caliban
212.789.6029
NCaliban@durst.org

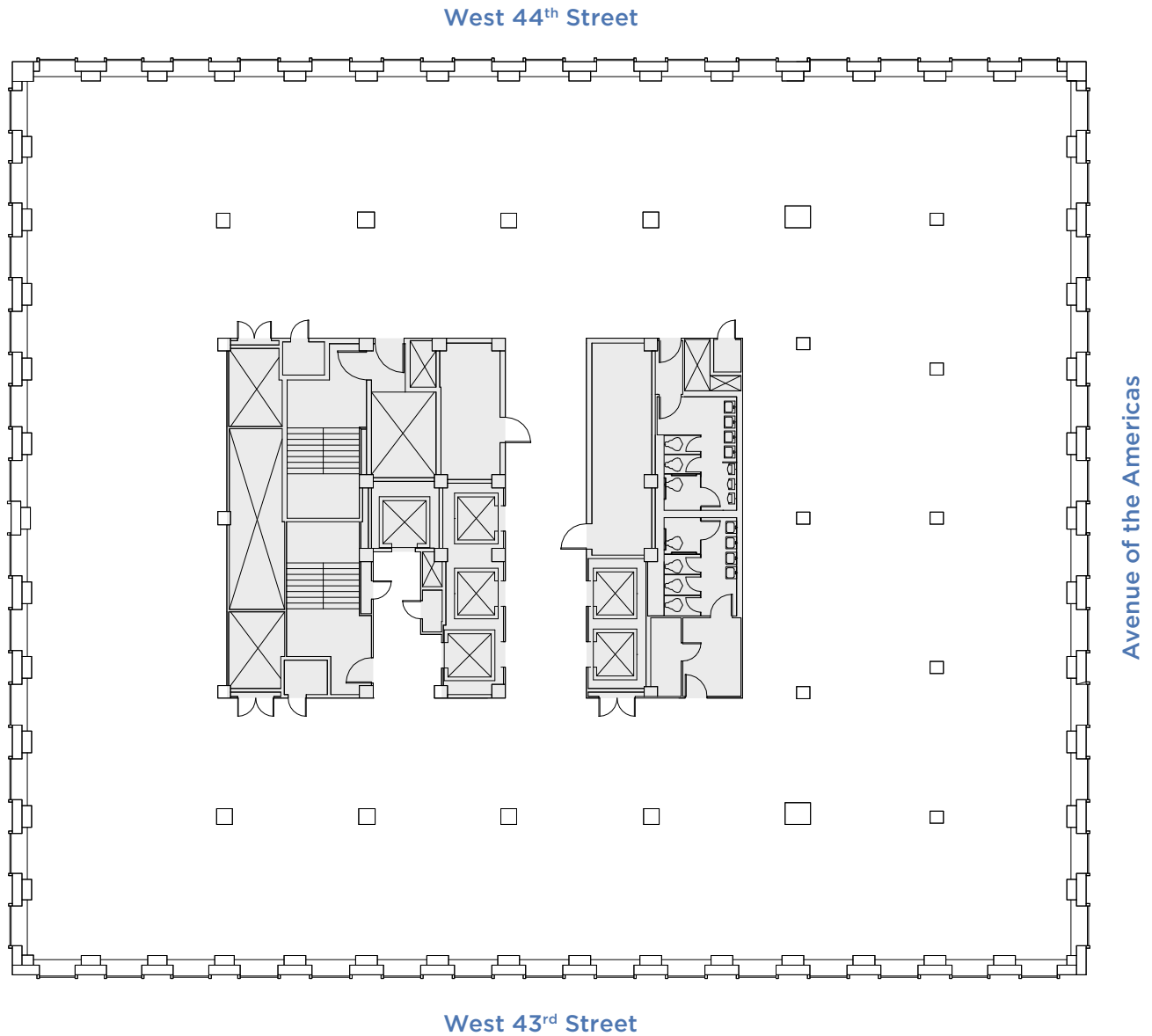
Bailey Caliban
212.257.6535
BCaliban@durst.org

1133Aoa.com

1133

Avenue of the Americas

CORE & SHELL PLAN ENTIRE FLOOR 39



22,872 SF



LEASING CONTACTS

Rocco Romeo
212.257.6630
RRomeo@durst.org

Nora Caliban
212.789.6029
NCaliban@durst.org

Bailey Caliban
212.257.6535
BCaliban@durst.org

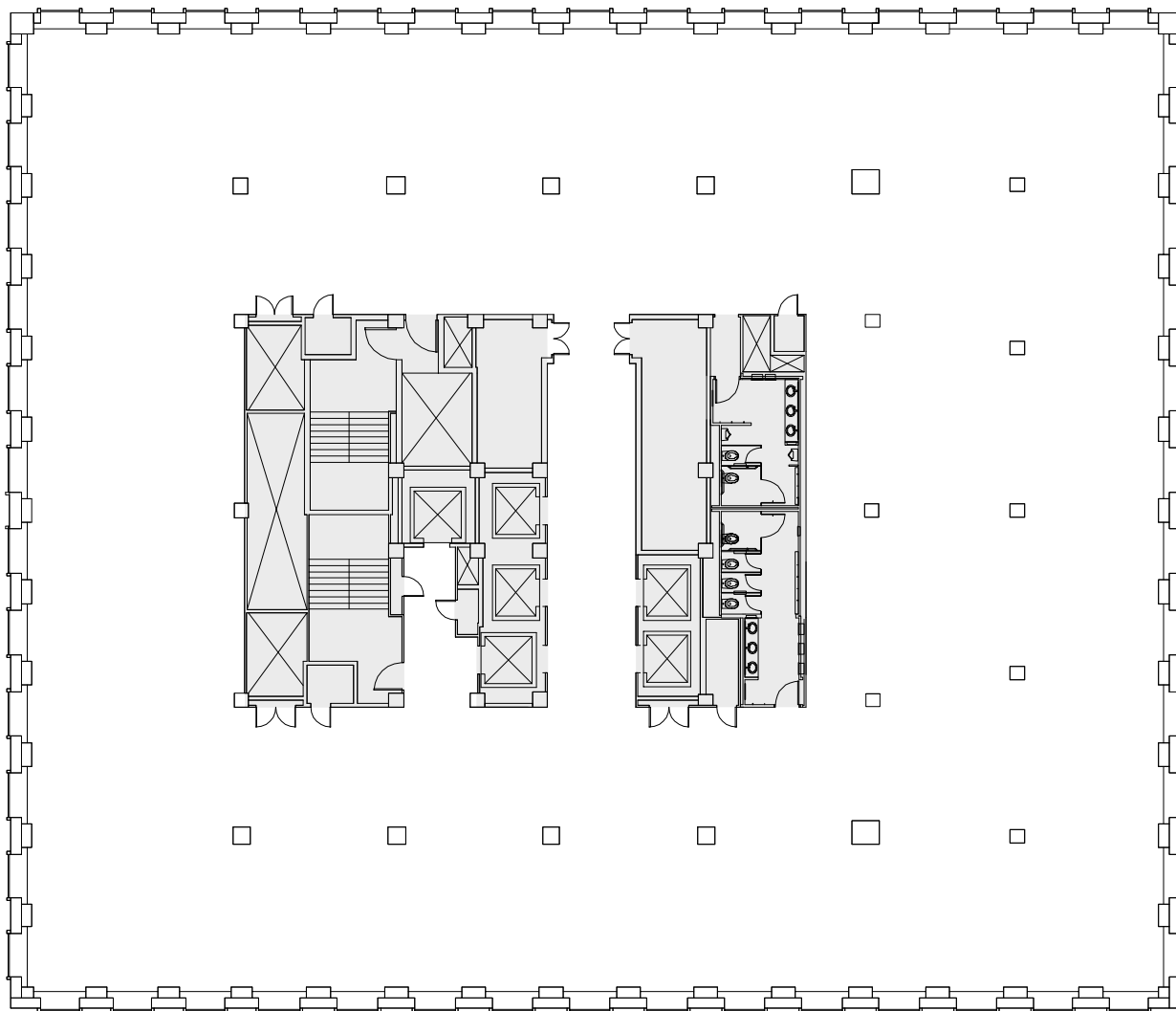
1133Aoa.com

1133

Avenue of the Americas

CORE & SHELL PLAN ENTIRE FLOOR 38

West 44th Street



Avenue of the Americas

West 43rd Street

22,858 SF



LEASING CONTACTS

Rocco Romeo
212.257.6630
RRomeo@durst.org

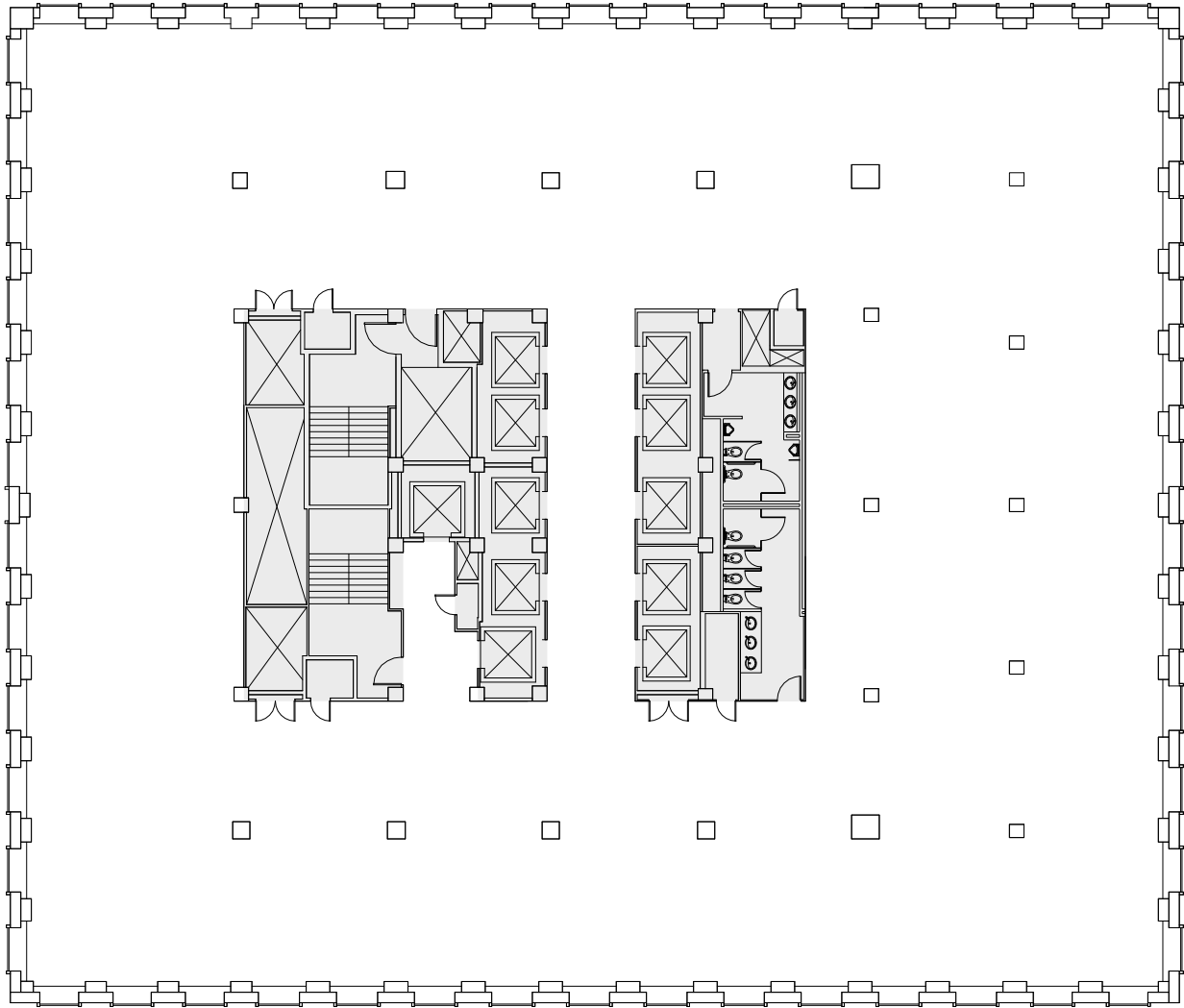
Nora Caliban
212.789.6029
NCaliban@durst.org

Bailey Caliban
212.257.6535
BCaliban@durst.org

1133Aoa.com

CORE & SHELL PLAN ENTIRE FLOOR 31

West 44th Street



Avenue of the Americas

West 43rd Street

22,915 SF



LEASING CONTACTS

Rocco Romeo
212.257.6630
RRomeo@durst.org

Nora Caliban
212.789.6029
NCaliban@durst.org

Bailey Caliban
212.257.6535
BCaliban@durst.org

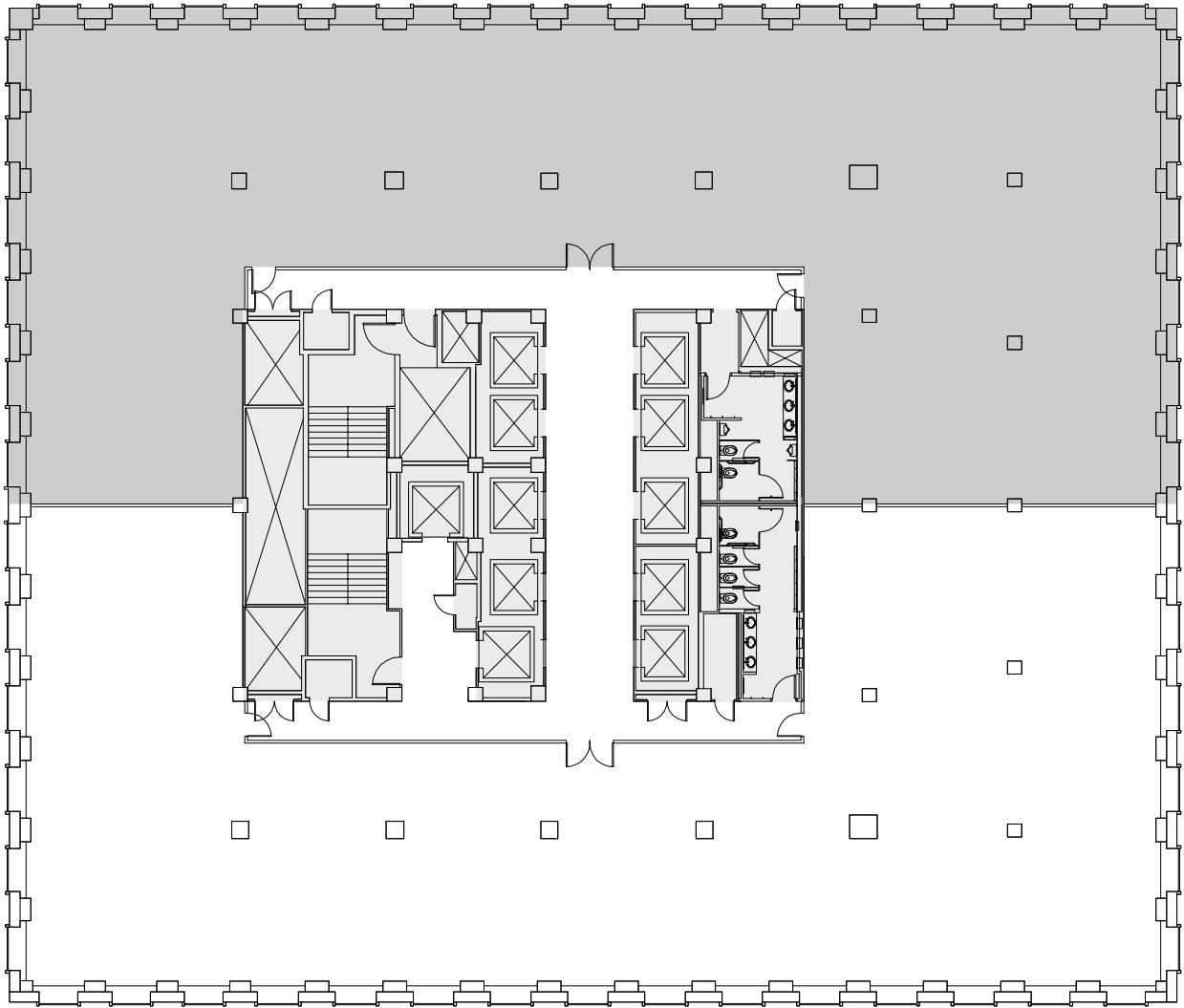
1133AoA.com

1133

Avenue of the Americas

CORE & SHELL PLAN PARTIAL FLOOR 30

West 44th Street



Avenue of the Americas

West 43rd Street

11,458 SF



LEASING CONTACTS

Rocco Romeo
212.257.6630
RRomeo@durst.org

Nora Caliban
212.789.6029
NCaliban@durst.org

Bailey Caliban
212.257.6535
BCaliban@durst.org

1133AoA.com

1133 AVENUE OF THE AMERICAS

ENTIRE FLOOR 16 | 22,111 SF

PROPERTY IMAGES



BUILDING EXTERIOR



BREAKOUT & OPEN WORK

[TAKE A VIRTUAL TOUR](#)

AVAILABILITY

- Available Now

FEATURES

- Premium Move-In Ready Office Space
- Blended Open and Private Office Layout
- Fully Furnished and Wired
- Sit/Stand Desks
- LED Lighting

PLAN DETAILS

WORKSPACE

Workstations	100
Private Offices	11
Reception	1

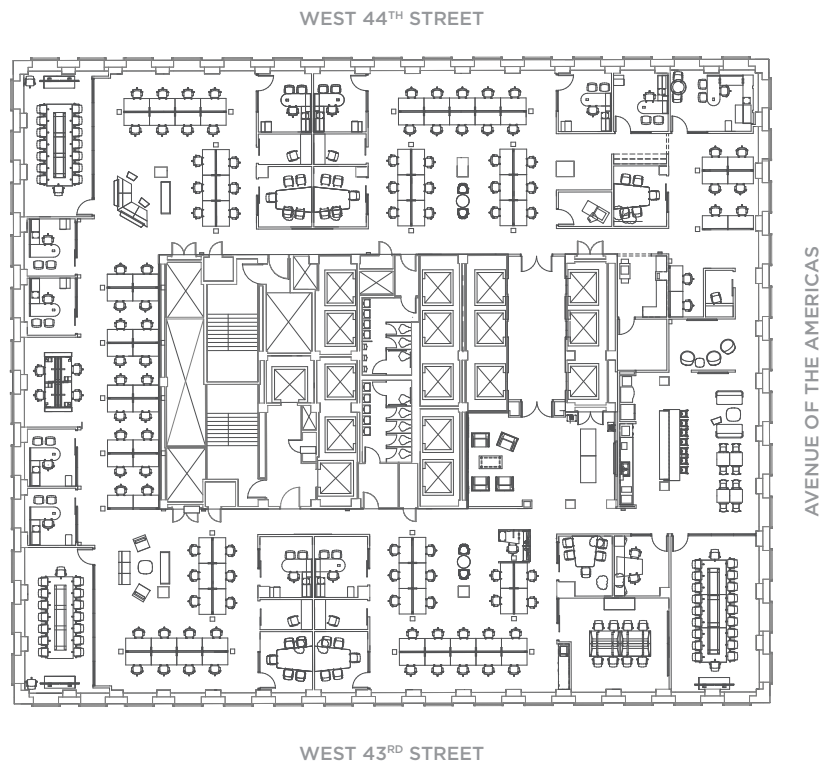
TOTAL 112

COLLABORATION SPACE

Conference Rooms	10
Phone Booths	5
Collaboration Booths	2
Lounges	2

PLANNED SUPPORT

Café	1
Wellness Room	1
Copy Rooms	2
IDF Room	1



ROCCO ROMEO
212.257.6630
RRomeo@durst.org

NORA CALIBAN
212.789.6029
NCaliban@durst.org

BAILEY CALIBAN
212.257.6535
BCaliban@durst.org

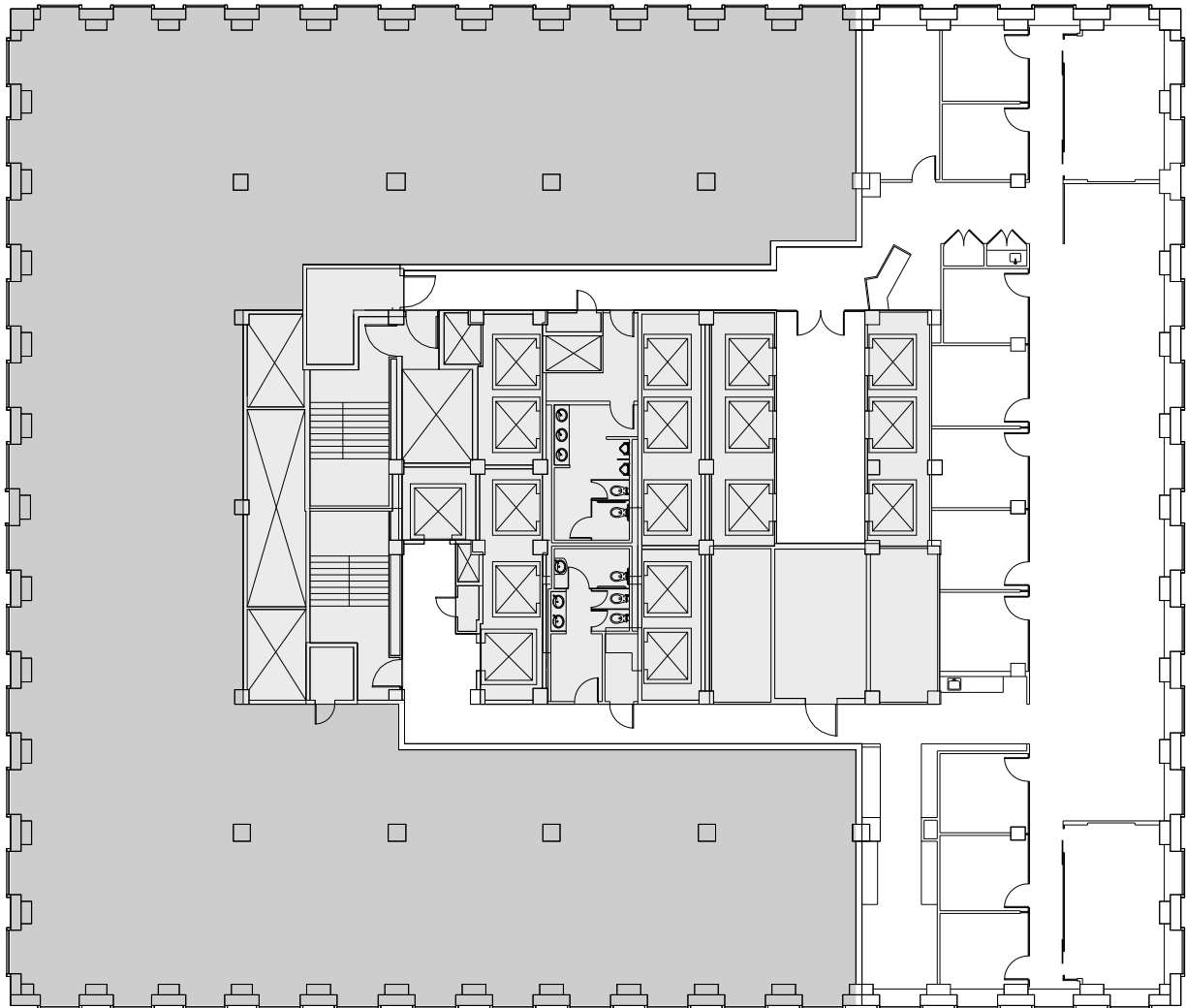
[DURSTREADY.COM](https://www.durstready.com)

1133

Avenue of the Americas

AS-BUILT PLAN ENTIRE FLOOR 14

West 44th Street



Avenue of the Americas

West 43rd Street

8,906 SF



LEASING CONTACTS

Rocco Romeo
212.257.6630
RRomeo@durst.org

Nora Caliban
212.789.6029
NCaliban@durst.org

Bailey Caliban
212.257.6535
BCaliban@durst.org

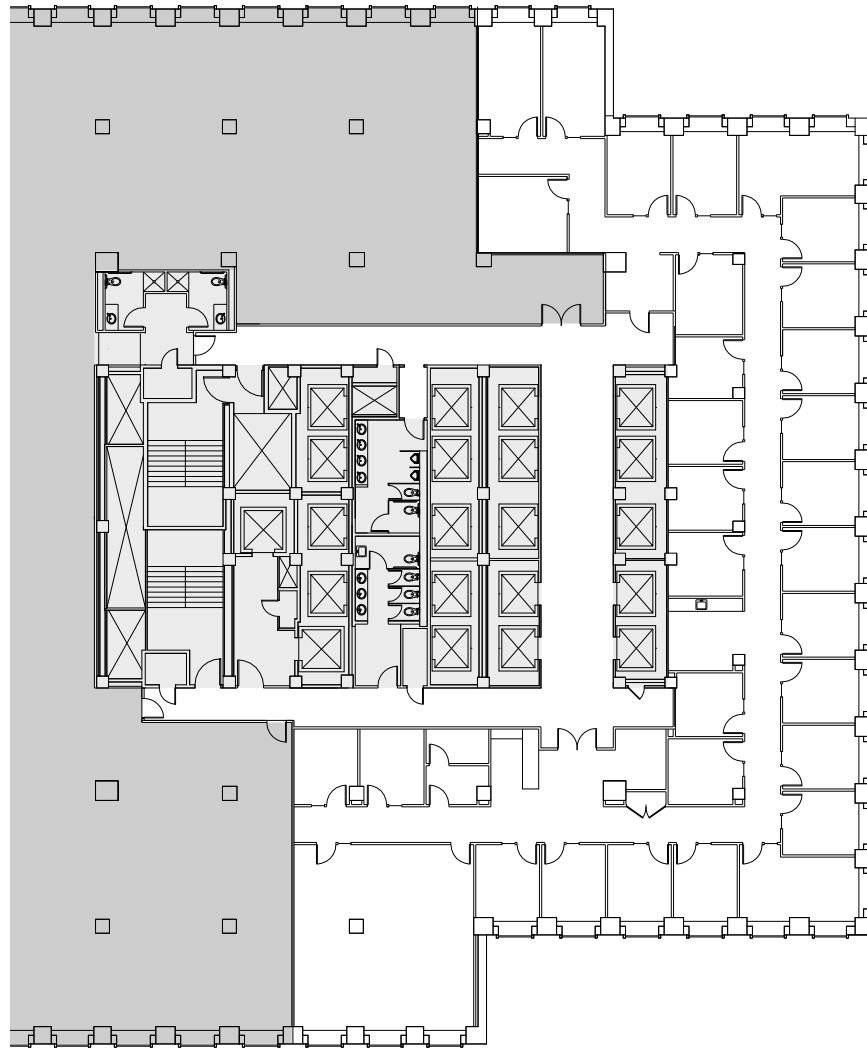
1133AoS.com

1133

Avenue of the Americas

AS-BUILT PLAN PARTIAL FLOOR 6 SUITE 620

West 44th Street



Avenue of the Americas

West 43rd Street



11,700 SF



LEASING CONTACTS

Rocco Romeo
212.257.6630
RRomeo@durst.org

Nora Caliban
212.789.6029
NCaliban@durst.org

Bailey Caliban
212.257.6535
BCaliban@durst.org

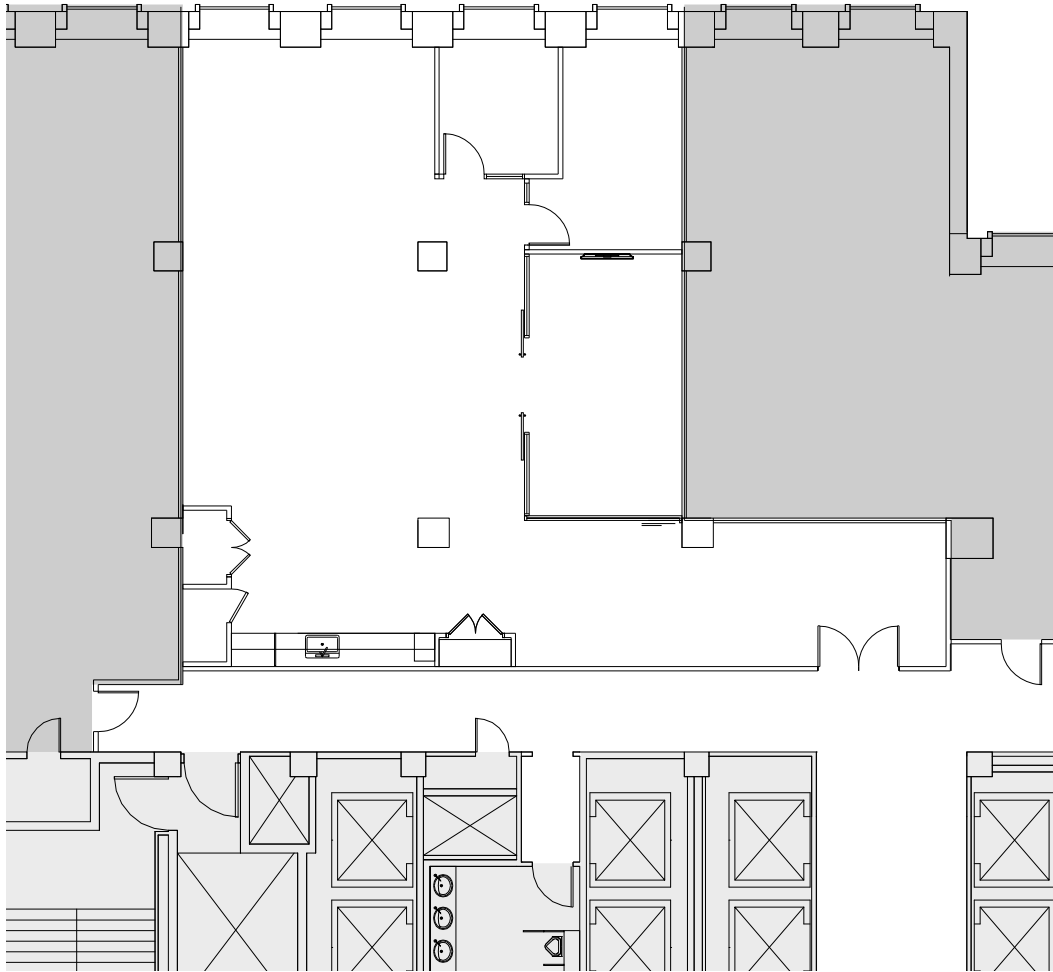
1133Aoa.com

1133

Avenue of the Americas

AS-BUILT PLAN PARTIAL FLOOR 6 SUITE 640

West 44th Street



3,273 SF



LEASING CONTACTS

Rocco Romeo
212.257.6630
RRomeo@durst.org

Nora Caliban
212.789.6029
NCaliban@durst.org

Bailey Caliban
212.257.6535
BCaliban@durst.org

1133AoA.com